



vortex®  
4200

**THE PRINTING REVOLUTION HAS STARTED...**

*Vortex® 4200 lightning-fast wide format printer for CAD/AEC/GIS and Graphics*

Powered by  
**memjet®**





## The Vortex® 4200

The Vortex 4200 wide format printer is powered by Memjet technology which makes it possible to print in full color at 30 cm per sec (12 ips) and up to 1067 mm (42") paper width. It features a 2 roll feed system, as standard, with additional sheet feeder, making the Vortex ideal for Display Graphics, Point-of-Sale, GIS (mapping) and CAD/AEC applications. Unlike traditional inkjet systems, the Memjet technology maintains full productivity for all image types, color mixes, and media types. The Vortex is the only roll fed printer in the market that was designed specifically for the wide format Memjet engine.

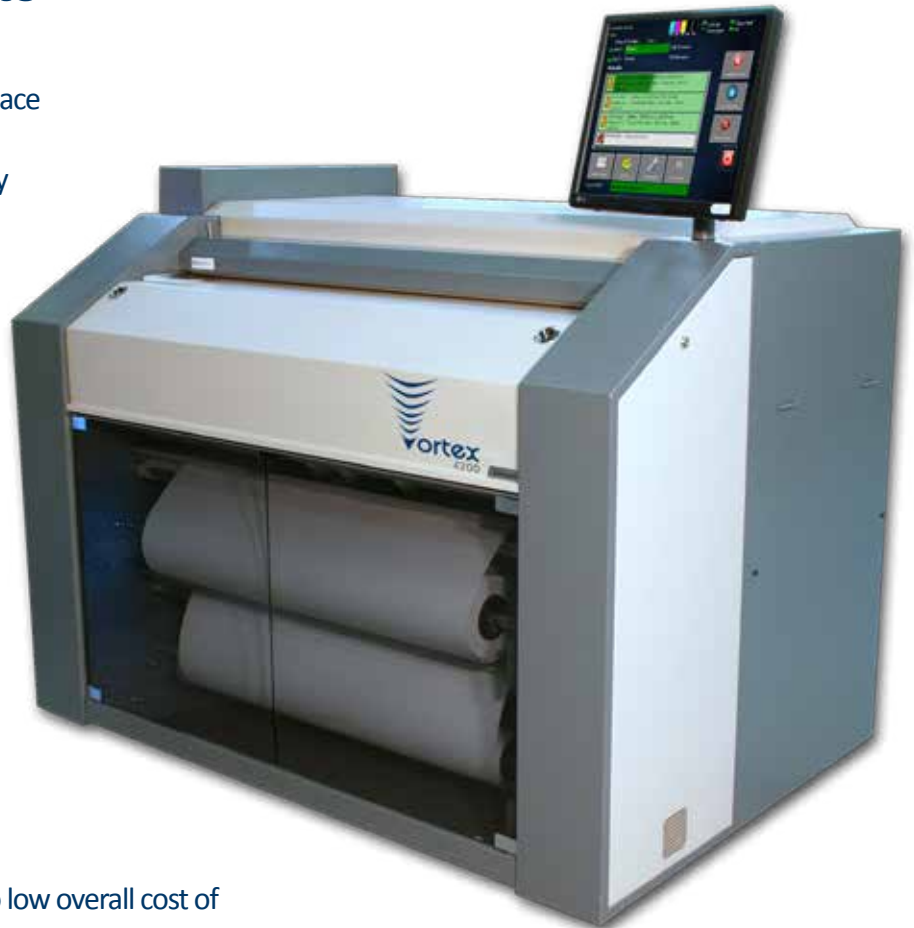
### Dimensions

	Width (mm)	Height (mm)	Depth (mm)	Weight (kg)
Printer	1620	1230	620 [B2]	217
Roll-feed	1620	1200	465 [B1]	192
Folder	1510 (1750*)	1160 (1500*)	1160 (1440*)	275 (330*)
Stacker	1150 (1250*)	450 (500*)	1250 (1380*)	56 (113*)
Printer + roll-feed packed	1910 *	1650 *	1360 *	515 *

\*Packed dimensions

# Features & Benefits

- Latest inkjet technology
- Small footprint, maximizing use of space
- While-you-wait job fulfilment
- 450 to 1000 sqm/hr output capability maximizes print shop productivity
- High speed - without quality loss
- Vibrant colors perfected by Caldera Grand Rip
- Full-size, intuitive, touchscreen display
- Finishing options including folder and stacker
- All-steel construction for durability in a commercial environment
- Environmentally-friendly water-based inks and low power consumption
- No heat or ozone emission
- Wide range of media -paper PP,PE, canvas, films, blue back
- Simple maintenance routines lead to low overall cost of production
- Speed and quality to enable shorter turnaround times
- Wide range of applications enables the replacement of several printers
- Complements analog printing techniques (flexo, litho, screen)



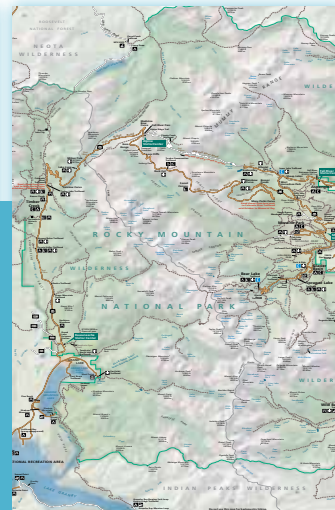
# Print Applications



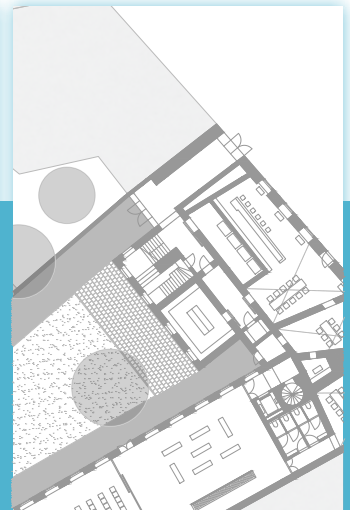
*Display graphics*



*Point of sale*



*GIS*



*CAD/AEC*



# Digital Print

With an effective speed of 500 B1 sheets per hour, the Vortex printer forms a useful adjunct to traditional analog print methodology (litho, screen print, flexo). The low set-up time and zero cost of setup means that short runs are now possible and cost-effective. Combine this with its variable data capability, and the Vortex 4200 makes previously impossible jobs now possible.

## 'Liberty' Printer Control Software



- Powerful, state-of-the art, fully-integrated printer management
- Raster and vector image management
- Intuitive 19" GUI/touchscreen user interface
- Visual job management and stored job recall
- Multiple copy management
- Integrated media management
- Wireless/LAN network enabled
- Built-in ink monitoring and automatic cost calculation
- Integrated statistics and history
- Integrated one-touch printer maintenance (printhead cleaning and alignment)
- Online/remote diagnostics and upgrades (using Team Viewer)
- Print engine error logging and event replay capability
- Windows 7 Professional system

## GrandRIP+ by Caldera



Caldera GrandRIP+ is the ultimate production workflow solution for large-scale wide format graphical printing.

Built for speed, reliability and flexibility, Caldera RIP keeps your business adaptable with the ability to add extra modules, including cost management, as you need them. All these powerful and indispensable tools are controlled from within one simple, intuitive user interface, allowing you to manage your production quickly, easily and seamlessly from start to finish.

# The Rig.807W Online Folder

A horizontal stacker for folded prints with capacity up to 250 A0 CAD/AEC or GIS printouts. The compact design saves much valuable floor space without sacrificing features including standard high capacity folded print stacking. The Rig.807W can fold print sizes from A4 to A0 with speeds up to 18 metres per minute. The folder includes as standard the fan fold and cross-fold options.

## Standards included:

Fan folder with 3 different programs

Cross folder

Folded copies stacked on top

Bypass tray on the rear (20 sheets, max A0)



## Supported speeds:

9 metres/min and 18 metres/min

# Online Stacker

The new online stacker perfectly matches the Vortex® 4200 printer. The auto forwarding rolls eliminate the possibility of paperjams. With the auto leveling stacker it is possible to easily stack GAI, CAD/CAM or GIS printouts up to A0 size (Maximum 35Kg or 75lbs total load).



# TG-PLOT

- The ideal tool for AEC CAD applications
- High performance PDF + HPGL2 plotting
- Work-flow for most large format devices monochrome + color!
- Easy and fast installation with multilanguage support
- Designed for professional reprographic companies who need professional workflow & quality!
- Support all standard formats like PDF, HPGL2, HP-RTL, CALS, PS, EPS
- Embedded driver technology. No matter what Windows driver is installed. TG-PLOT has its own drivers.
- Cost efficiency through easy workflow and simple usage



# Memjet Technology

The core element of Memjet's inkjet technology is the revolutionary printhead which was developed in Memjet Labs disrupting previous assumptions about color inkjet printing.

The result is a printhead that is up to 8 times faster than traditional inkjet printheads! Memjet color printheads use "waterfall" technology. Simply put, each of the five printheads contain 70,400 nozzles and fire billions of ink drops per second. It's more energy efficient and even faster than most black and white printers. The Memjet printhead is a paradigm shift in printhead design. It is totally disrupting the wide format inkjet market and providing new methodologies to traditional print shops.



## TECHNOLOGY

- Single pass thermal inkjet
- Four colors - (CMYK)

## IMAGING

- 5 thermal printheads
- Five channels - (CMYKK)
- 352,000 nozzles (70,400 nozzles/head)
- 1,2pL droplet
- 3 billion ink drops per second

## PRINT QUALITY

- output resolution of 1600 x 1600 or 800 x 1600

## PRINT SPEED

- 30 cm/s (12 ips) or 15 cm/s (6 ips)
- 1000 sq.m/hour (9,688 sq.ft/h) or 450 sq.m/h (4,844 sq.ft/h) graphics
- 450 separate sheets DIN A0/hour CAD/GIS (932 or 466 ANSI E size/hour)
- first print out speed: 22 sec (27Mb file size A0)

## MEDIA HANDLING

- Heavy duty 2 rolls
- Printhead alignment is stored "per roll" to allow for different media
- 200m rolls (dependent upon media thickness)
- 3 inch core media
- Manual sheet feed - max 500 micron
- Roll changing during printing
- Roll-to-Sheet, Roll-to-fold, Sheet-to-Sheet

## INK CARTRIDGES

- Dye based aqueous inks, Colors: CMYKK
- Cartridge sizes 2 litre or 10 litre (option)

## POWER INTERFACE

- Power supply 110 - 240V
- Power consumption ( max. 1200 W)

## USER INTERFACE

- Intuitive GUI on 19" touchscreen display
- 'Liberty' printer control software
- Caldera GrandRIP+ software color management

## MEDIA FORMATS

- Width: 210 mm (8.27") to 1067 mm (42")
- Length: 210 mm to 200 meters
- Thickness: 80-230gsm (roll fed): 64 to 400 gsm (sheet fed). Max 20pt card stock.
- Continuous roll or cut sheet on plain (CAD), matt, glossy, satin, backlit, self -adhesive, PE, PP, blueback and other inkjet-coated media

## FINISHING

- Built-in X-axis cutter
- Online folder: 9m/min, 18m/min
- 250 A0 CAD/CAM, Fan fold or cross fold
- Online stacker: auto forwarding and leveling

## INTERFACE

- Ethernet TCP/IP LAN 10/100/1000 Mb/s
- Wireless
- RS 232 serial port
- USB 2.0

## SUPPORTED CLIENTS

- Caldera
- TG Soft
- Windows driver for Windows 7, XP

## CONTROLLER CONFIGURATION

- Intel® Pentium Dual Core Processor
- 4GB, DDR3, 1600MHz memory
- 120GB SATA3 2,5" SSD
- Intel® Integrated Graphics
- Windows 7 Professional

## SUPPORTED DATA FORMATS

- Native PDF
- TIFF, JPEG, EPS, PNG, PS, PRN, PSD, CFX, FS, PD, FPX, PCD, PCT, PICT, WMF, TGA, BMP, PCX. PLT, HPGL

## ENVIRONMENTAL SPECIFICATION

- Operating temperature: 15°C to 30°C (59°F to 86°F)
- Maximum rate of change:  $\pm 0.5^{\circ}\text{C}/\text{minute}$  ( $\pm 0.27^{\circ}\text{F}/\text{minute}$ )
- Humidity: 20% to 80% RH non-condensing
- Atmospheric pressure: 70 kPa to 106 kPa



**RTI Digital Ltd.**

40 Dumart Place, Kitchener  
N2K 3C7 Ontario, Canada  
info@rti-digital.com, www.rti-digital.com

